

Danse Macabre

(Theme Fragments)

Tempo de Spooky

Camille Saint-Saens
French - 1874
Original Key G minor

Intro

The Intro section consists of two staves of music. The first staff begins with a treble clef, a key signature of one flat (B-flat), and a 3/4 time signature. The melody is composed of dotted half notes and quarter notes, starting on G4. The second staff continues the melody with similar rhythmic patterns, including eighth and quarter notes.

A Theme

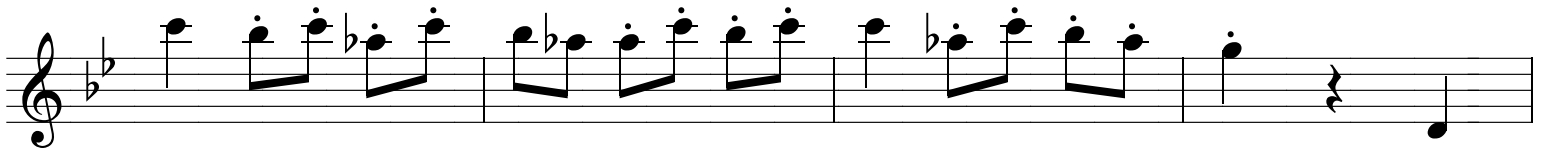
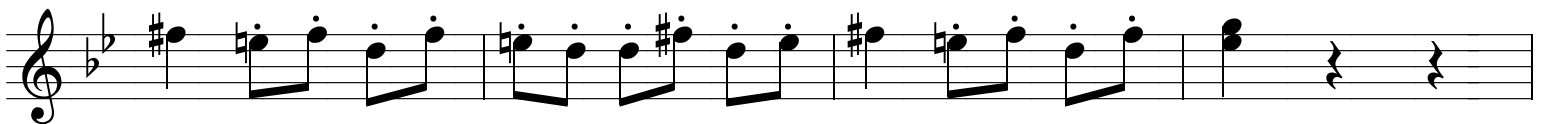
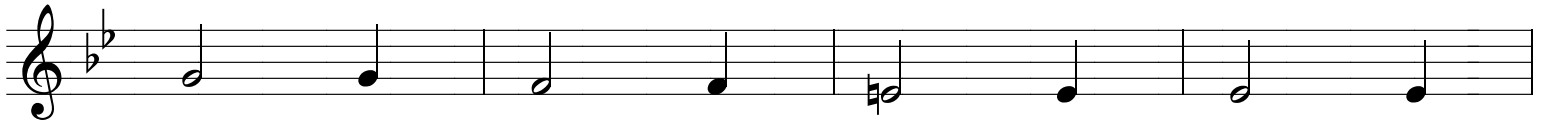
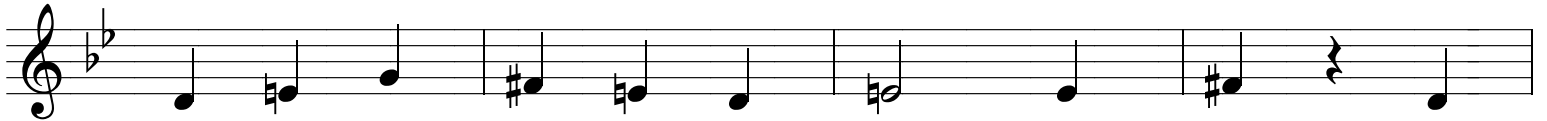
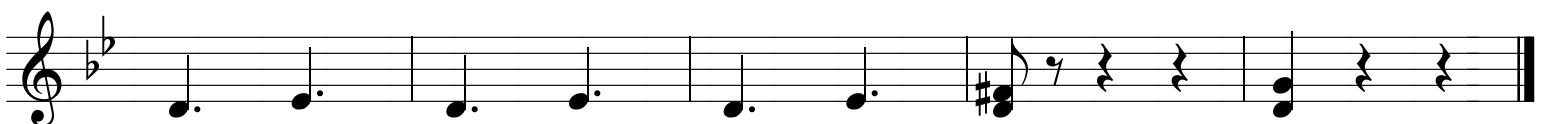
The A Theme section consists of two staves of music. The first staff begins with a repeat sign (double bar line with two dots) and a treble clef. The melody features eighth notes and quarter notes, with a key signature of one flat. The second staff continues the melody, ending with a double bar line.

B Theme

The B Theme section consists of two staves of music. The first staff begins with a treble clef and a key signature change to two flats (B-flat and E-flat). The melody features eighth notes and quarter notes. The second staff continues the melody, ending with a double bar line.

C Theme

The C Theme section consists of two staves of music. The first staff begins with a treble clef and a key signature change to one flat (B-flat). The melody features eighth notes and quarter notes. The second staff continues the melody, ending with a double bar line.

*D Theme**E - Finale*

Danse Macabre, in the original, is much longer than this fragmentary version. You can find several orchestral recordings on the internet.

I have adapted this set of fragments to be manageable for folk instruments. I have marked sections as "A Theme", "B Theme", etc. Feel free to repeat themes and phrases as you will, don't repeat themes or phrases, or drop out themes or phrases. Improvise if you wish.